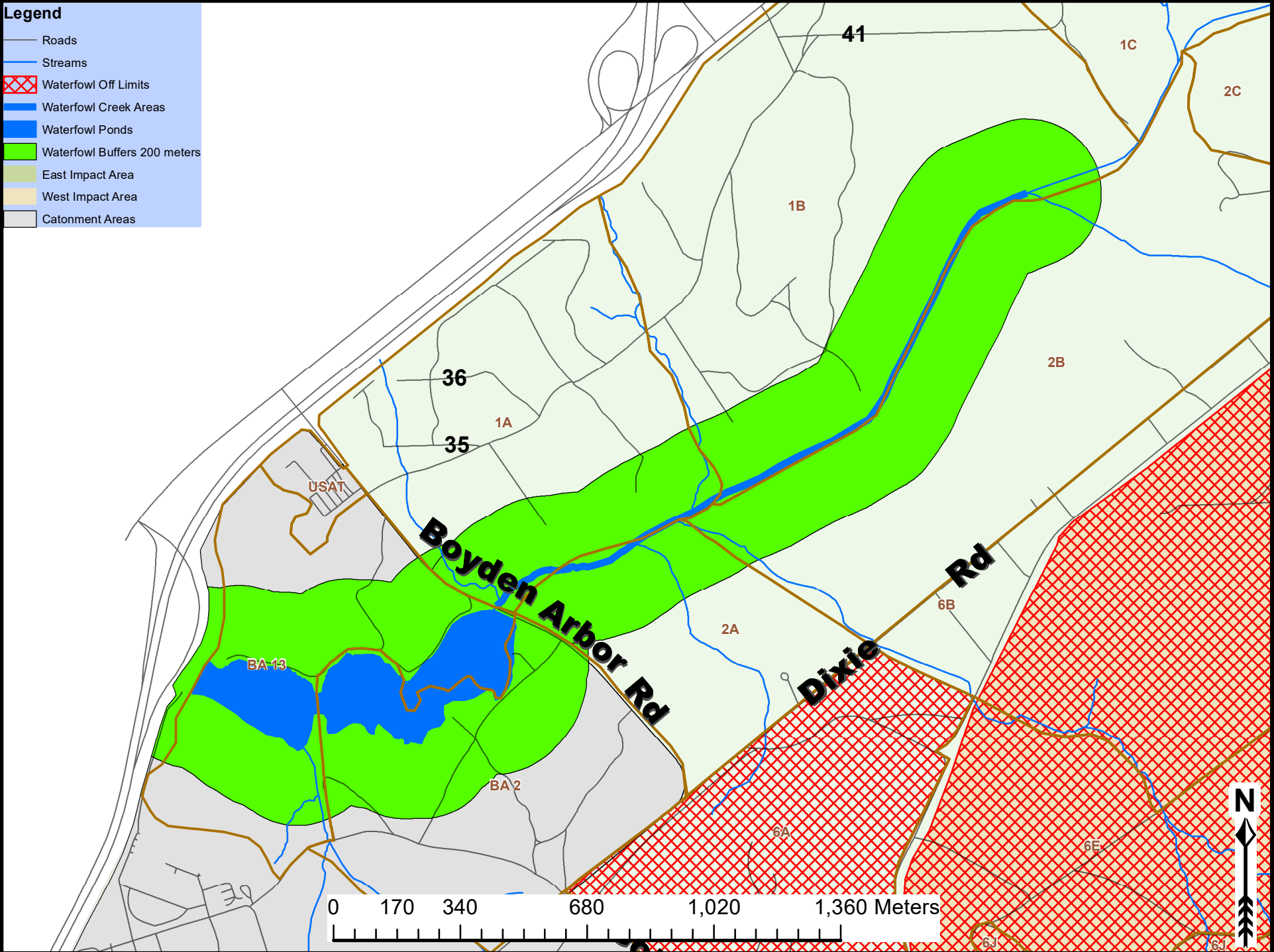


# Boyden Arbor & Gills Creek Waterfowl Hunting Areas

**Legend**

- Roads
- Streams
- Waterfowl Off Limits
- Waterfowl Creek Areas
- Waterfowl Ponds
- Waterfowl Buffers 200 meters
- East Impact Area
- West Impact Area
- Catonment Areas



31 January, 2018

Prepared by:  
Ian Smith  
Forestry Branch